

Werk

Titel: Allgemeine Encyclopädie der Wissenschaften und Künste

Jahr: 1818

Kollektion: Wissenschaftsgeschichte

Werk Id: PPN374105588

PURL: <http://resolver.sub.uni-goettingen.de/purl?PID=PPN374105588> | LOG_0054

OPAC: <http://opac.sub.uni-goettingen.de/DB=1/PPN?PPN=374105588>

Terms and Conditions

The Goettingen State and University Library provides access to digitized documents strictly for noncommercial educational, research and private purposes and makes no warranty with regard to their use for other purposes. Some of our collections are protected by copyright. Publication and/or broadcast in any form (including electronic) requires prior written permission from the Goettingen State- and University Library.

Each copy of any part of this document must contain these Terms and Conditions. With the usage of the library's online system to access or download a digitized document you accept the Terms and Conditions.

Reproductions of material on the web site may not be made for or donated to other repositories, nor may be further reproduced without written permission from the Goettingen State- and University Library.

For reproduction requests and permissions, please contact us. If citing materials, please give proper attribution of the source.

Contact

Niedersächsische Staats- und Universitätsbibliothek Göttingen
Georg-August-Universität Göttingen
Platz der Göttinger Sieben 1
37073 Göttingen
Germany
Email: gdz@sub.uni-goettingen.de

Acanthocephala.
Echinorhynchus Gigas, mas

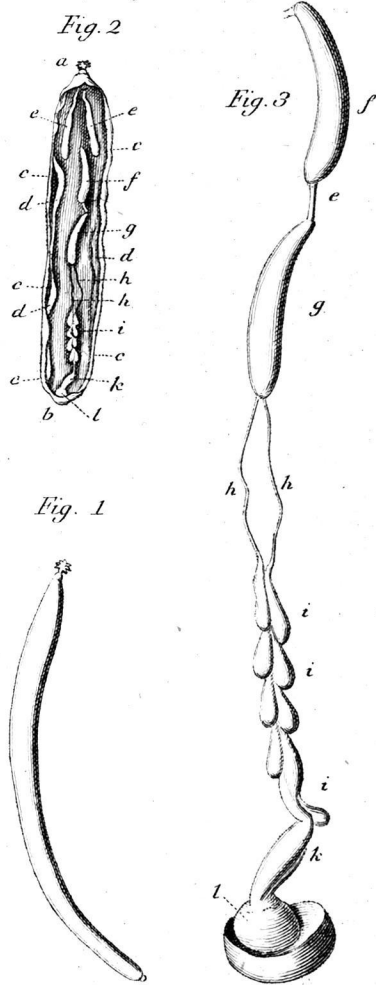


Fig. 1. Mas naturali magnit. Fig. 2. Idem aperto corporis cavo. a. Rostrum. b. Pars corporis postica. c. Cutis cum fibris circularibus. d. Stratum fibrarum longitudinalium. e. Lemnisci Rudolphi. f. g. Testiculus anterior et posterior. h. h. Ductus deferentes. i. Vesica seminalis. k. Ductus ejaculatorius. l. Bursa retracta. Fig. 3. Genitalia masculina aucta magnit. e. Ductus inter testiculum anteriorem et posteriorem. Reliquae litterae ut in Fig. 2.

Ascaris reflexa Nitzsch.
(in coecis et recto *Caprimulgi europaei*)

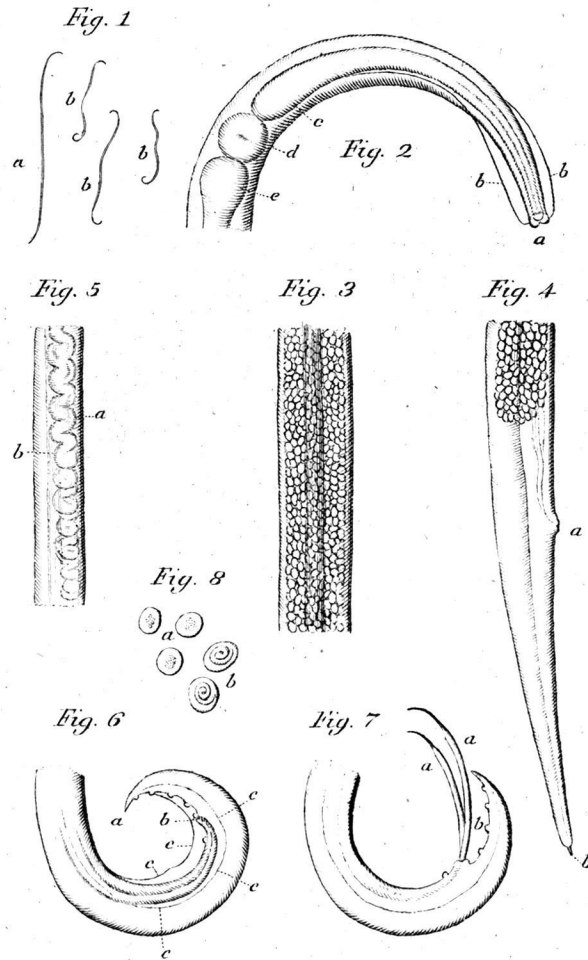


Fig. 1. Magnitudo naturalis, a. Femina. b. Mares. Fig. 2. Antica pars. a. Caput trivalve. b. b. Membrana lateralis. c. Oesophagus. d. Ventriculus. e. Intestinum. Fig. 3. Feminae pars media. Fig. 4. Feminae pars postica. a. Anus? b. Acumen caudale. Fig. 5. Mavis pars media. Fig. 6. Mavis pars postica. a. Acumen caudale. b. Anus penis spiculis retractis. b. b. Membrana tenuis lateralis. Fig. 7. Eudem. a. a. Spicula exserta. b. Tubercula caudalia quinque. Fig. 8. Ova. a. imatura, b. matura, quibus embryo inest.

Ascaris semiferes Zeder.
(in intestinis *Charadrii Vanelli*)

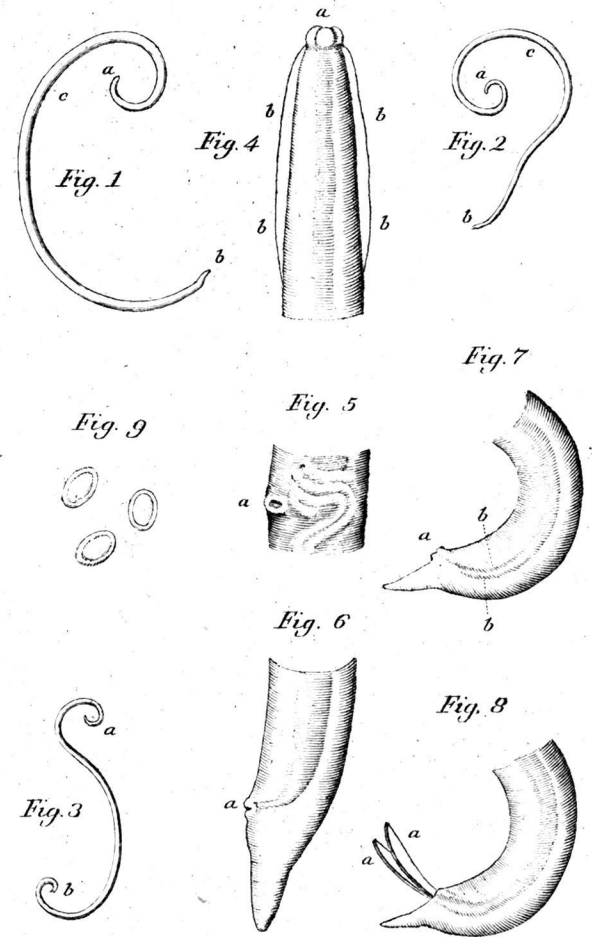


Fig. 1. 2. Feminae magnit. natur. a. Caput. b. Cauda. c. Vulva. Fig. 3. Mas magnit. nat. Fig. 4. Pars antica. a. Caput trivalve. b. Alae laterales. Fig. 5. Feminae corporis pars. a. Vulva. Fig. 6. Feminae pars postica. a. Anus. Fig. 7. Mavis postica. a. Anus. b. b. Spicula retracta. Fig. 8. Eadem. a. a. Spicula exserta. Fig. 9. Ova.