

Werk

Titel: Reise von Tscherkask nach Astrachan und dem Aufenthalt in dieser Stadt

Untertitel: von dem Anfang des Augusts 1769. bis zum 5. Junius 1770.

Autor: Gmelin, Samuel Gottlieb

Verlag: Kayserl. Acad. der Wiss.

Ort: St. Petersburg

Jahr: 1774

Kollektion: vd18.digital; Zoologica

Digitalisiert: Niedersächsische Staats- und Universitätsbibliothek Göttingen

Werk Id: PPN632646756

PURL: <http://resolver.sub.uni-goettingen.de/purl?PPN632646756>

OPAC: <http://opac.sub.uni-goettingen.de/DB=1/PPN?PPN=632646756>

LOG Id: LOG_0012

LOG Titel: Tab. 20. [bis] 29.

LOG Typ: figure

Übergeordnetes Werk

Werk Id: PPN632643285

PURL: <http://resolver.sub.uni-goettingen.de/purl?PPN632643285>

OPAC: <http://opac.sub.uni-goettingen.de/DB=1/PPN?PPN=632643285>

Terms and Conditions

The Goettingen State and University Library provides access to digitized documents strictly for noncommercial educational, research and private purposes and makes no warranty with regard to their use for other purposes. Some of our collections are protected by copyright. Publication and/or broadcast in any form (including electronic) requires prior written permission from the Goettingen State- and University Library.

Each copy of any part of this document must contain these Terms and Conditions. With the usage of the library's online system to access or download a digitized document you accept the Terms and Conditions.

Reproductions of material on the web site may not be made for or donated to other repositories, nor may be further reproduced without written permission from the Goettingen State- and University Library.

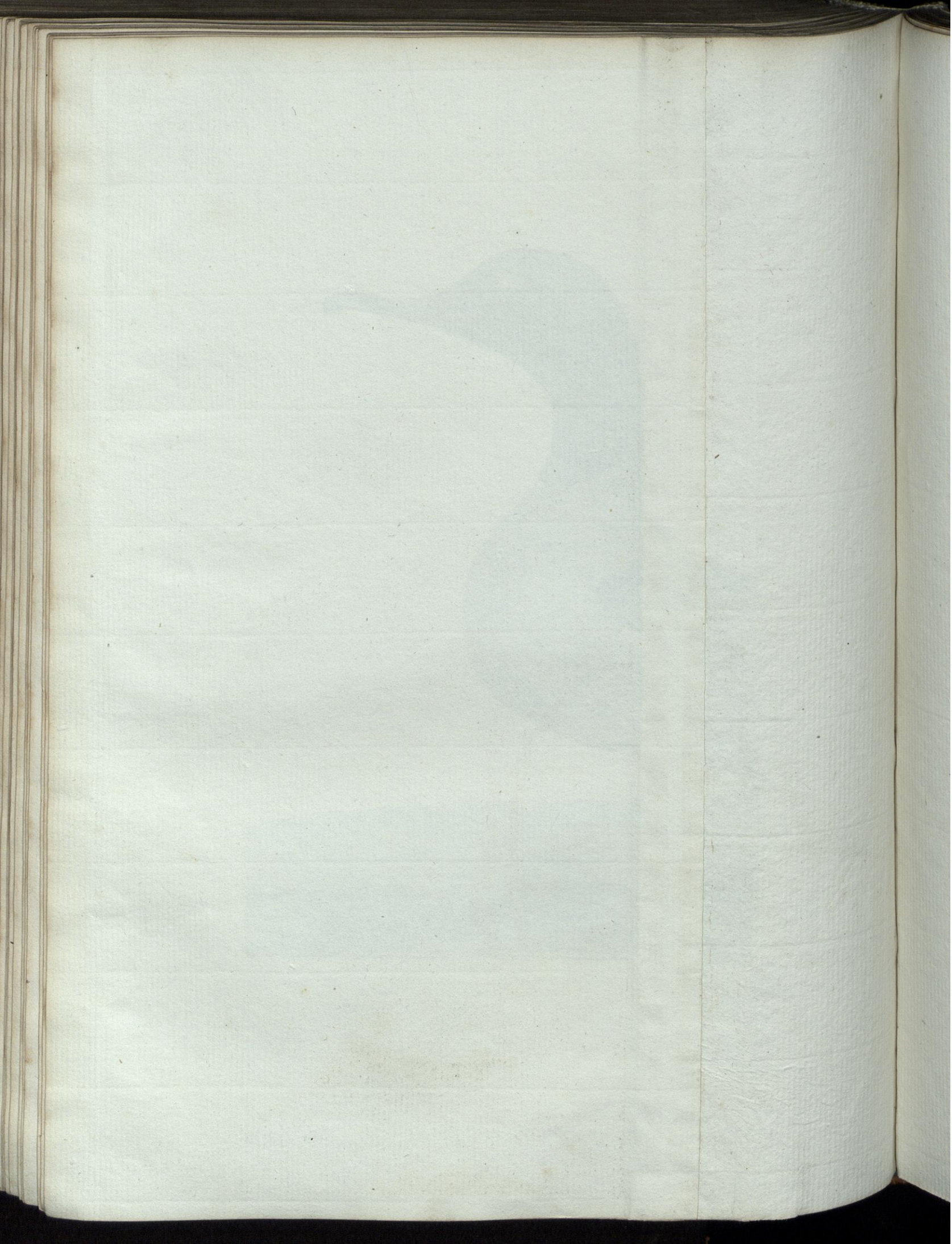
For reproduction requests and permissions, please contact us. If citing materials, please give proper attribution of the source.

Contact

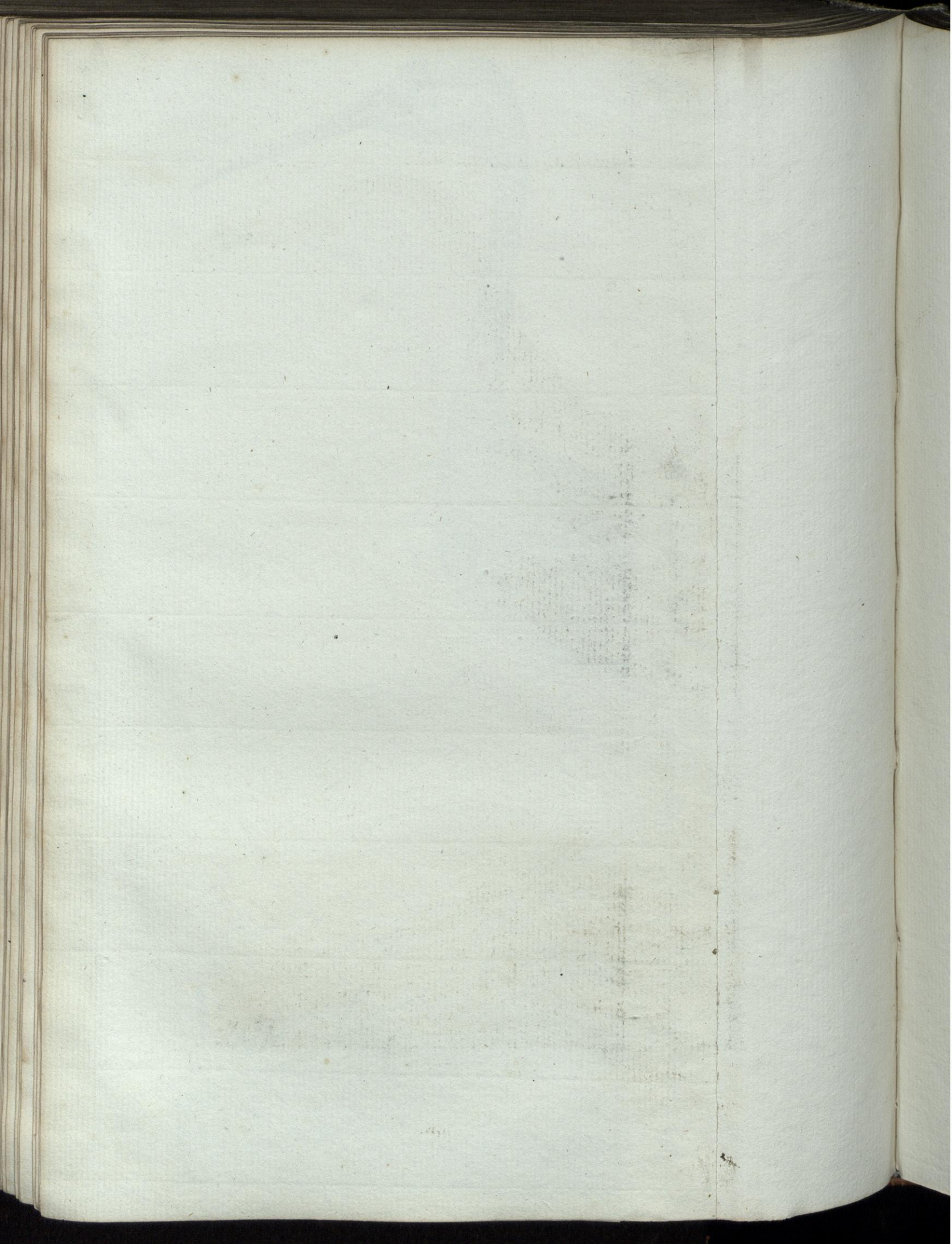
Niedersächsische Staats- und Universitätsbibliothek Göttingen
Georg-August-Universität Göttingen
Platz der Göttinger Sieben 1
37073 Göttingen
Germany
Email: gdz@sub.uni-goettingen.de

Gmelins Reise-Beschreibung Tom II. Tab 20. pag 188.

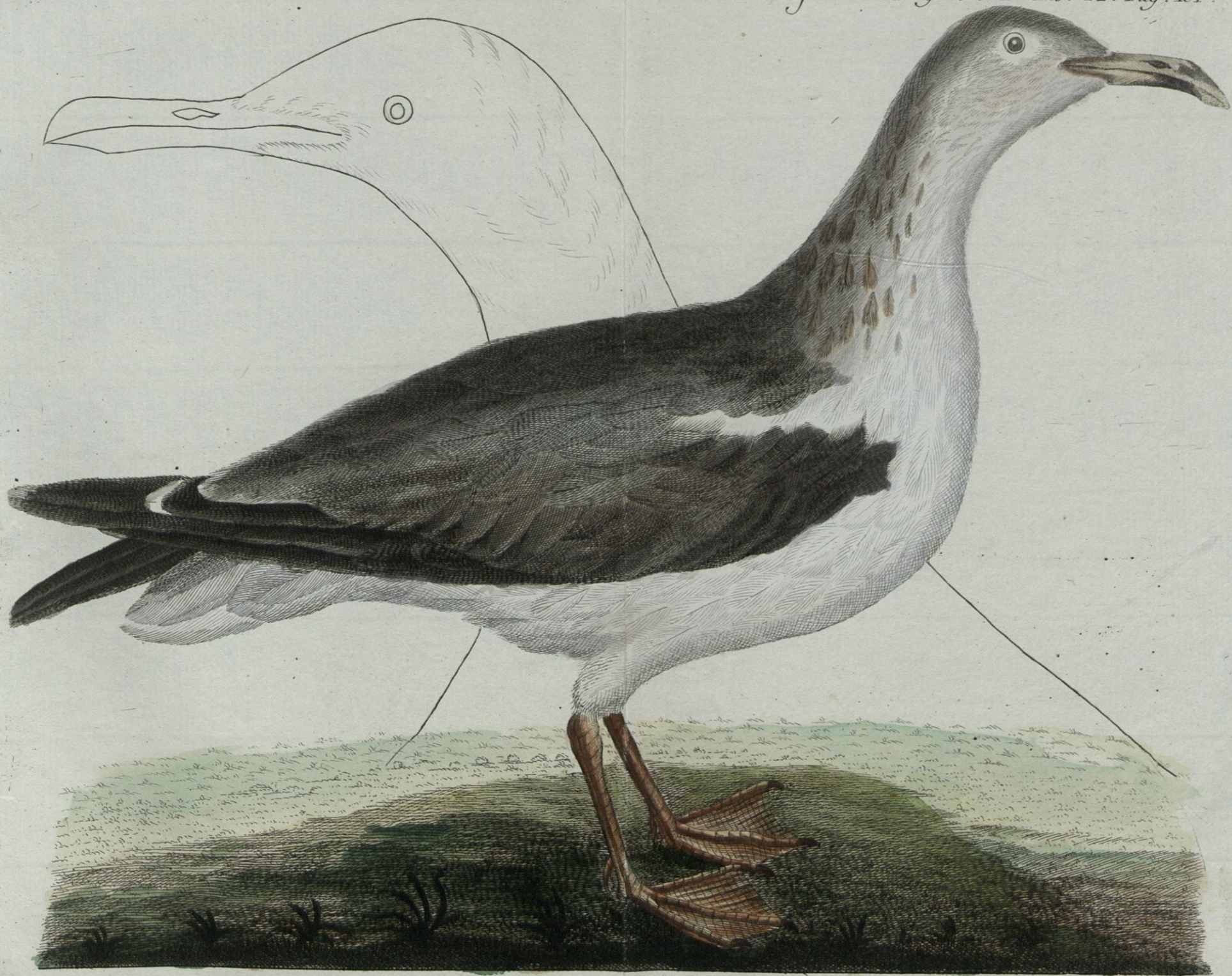




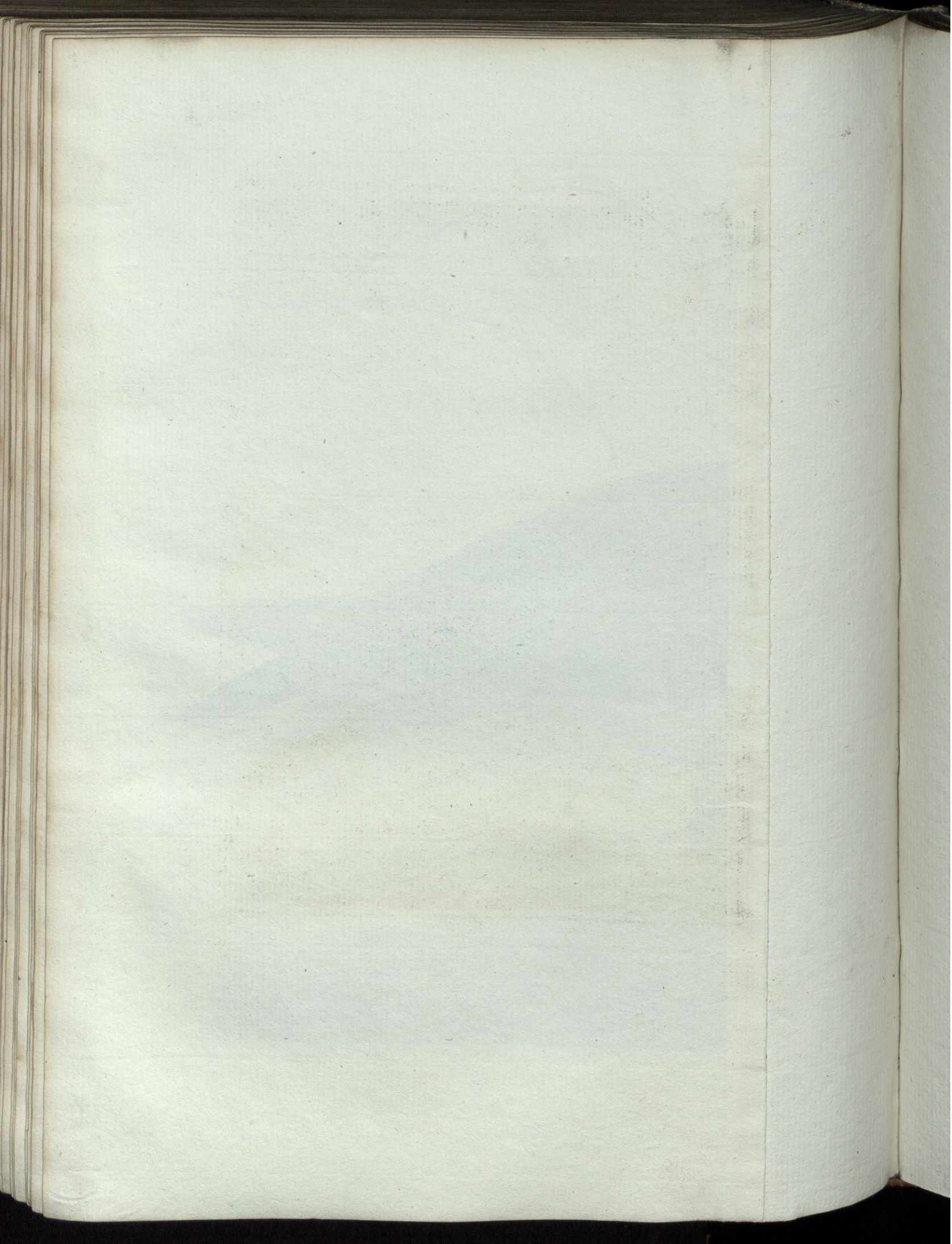




Gmelins Reisebeschreibung Tom. II. Tab. 22. Pag. 191.



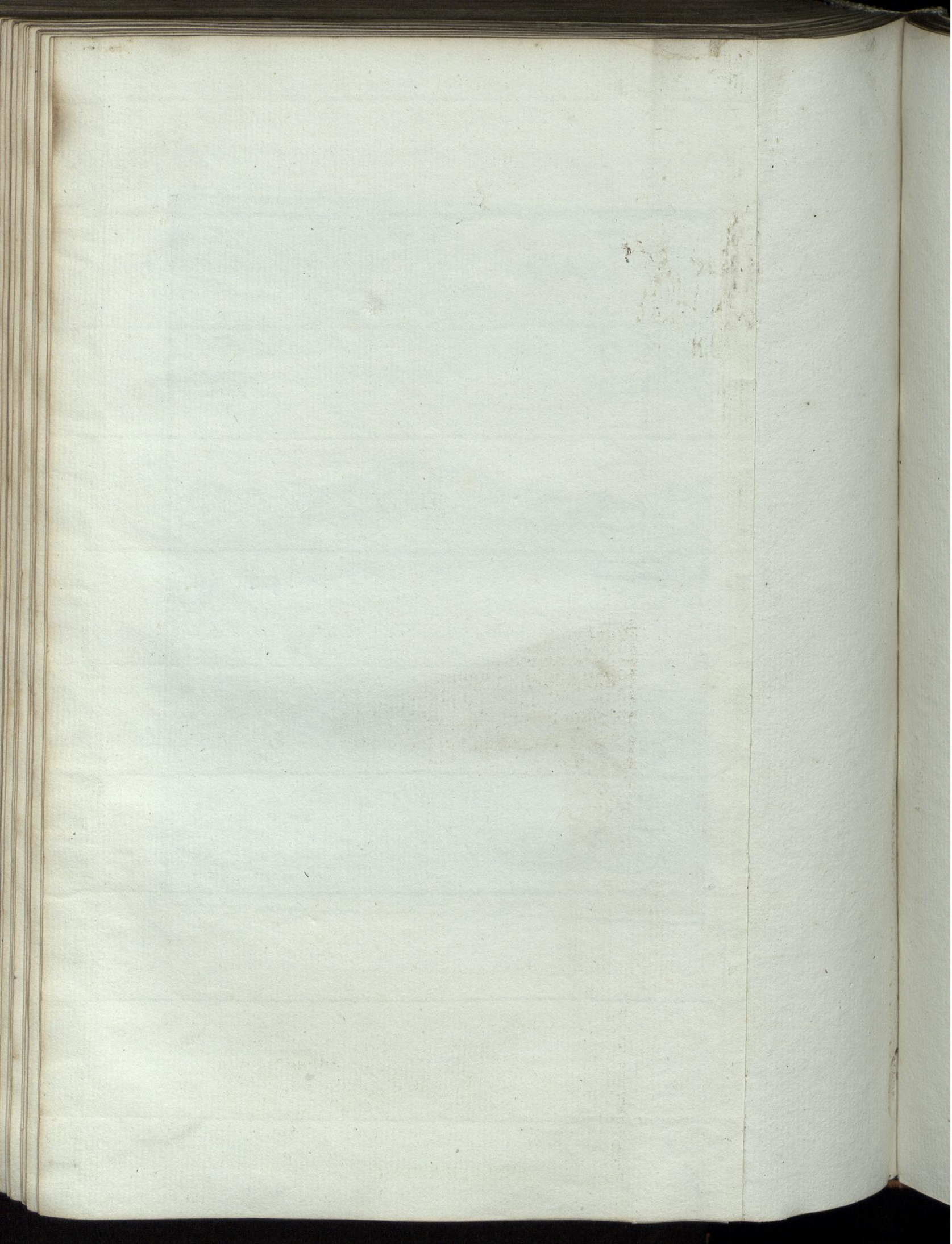
Larus maculatus



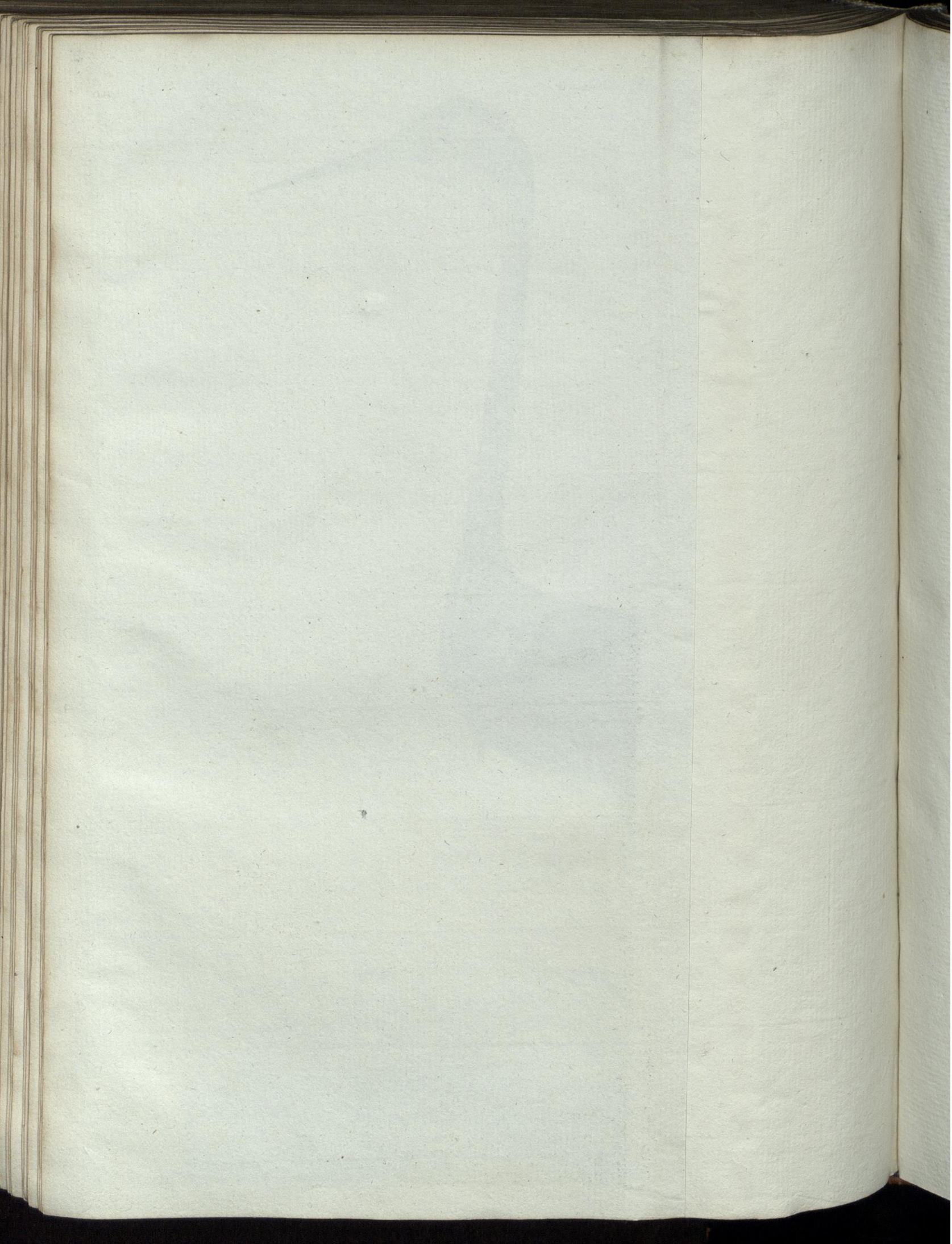
Gmelins Reisebeschreibung Tom 11 tab. 23 pag. 199.



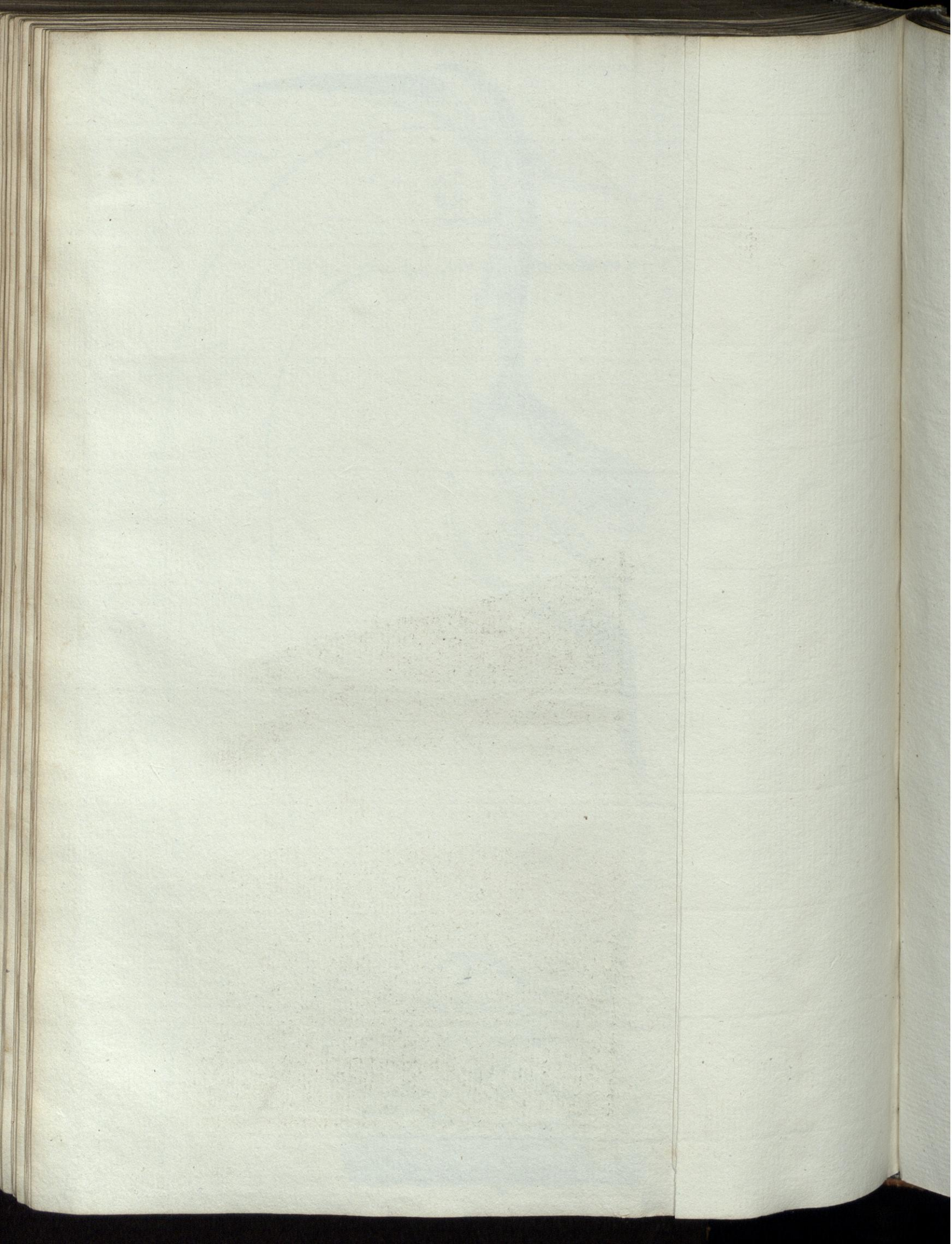
Mustela ermineum majus.



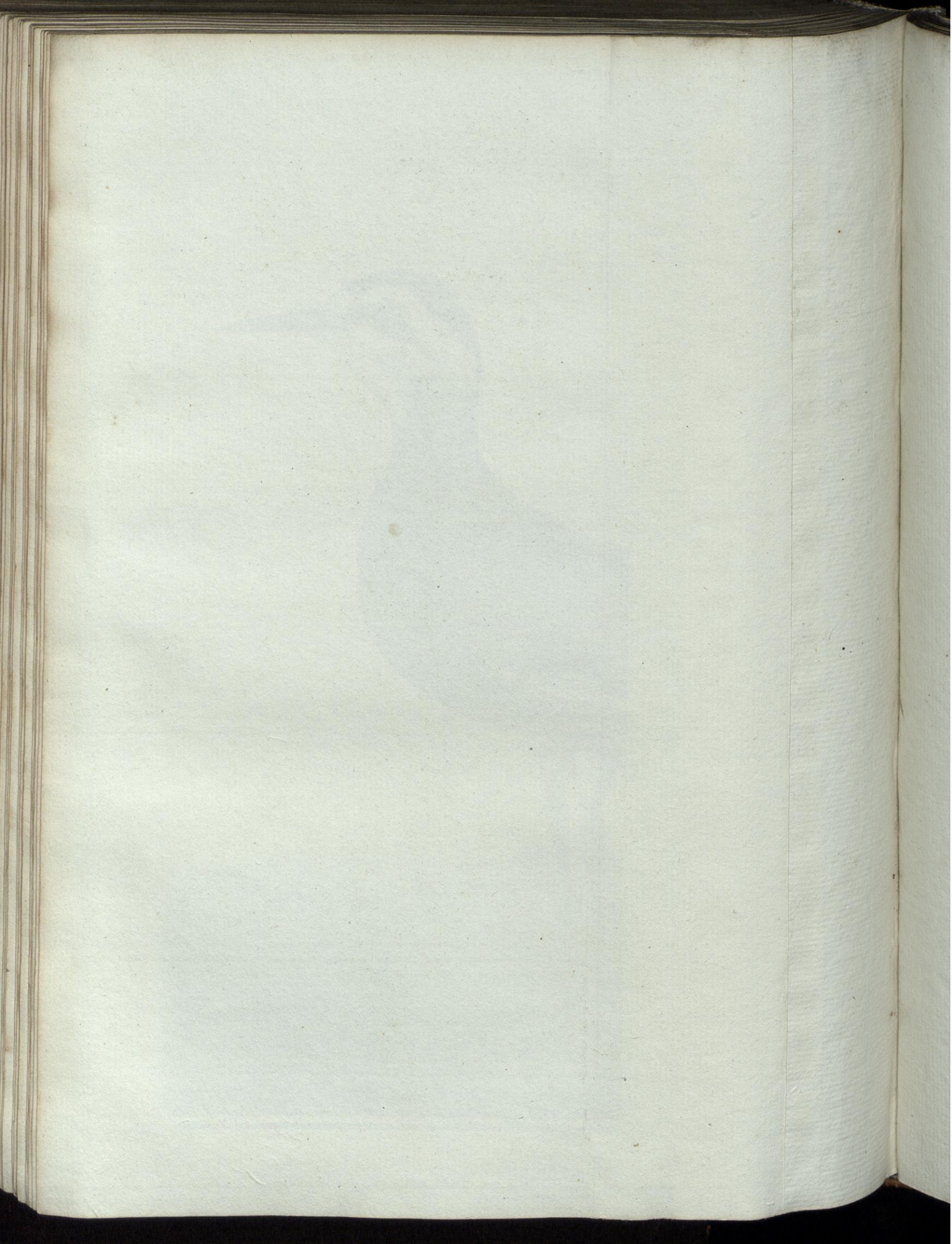










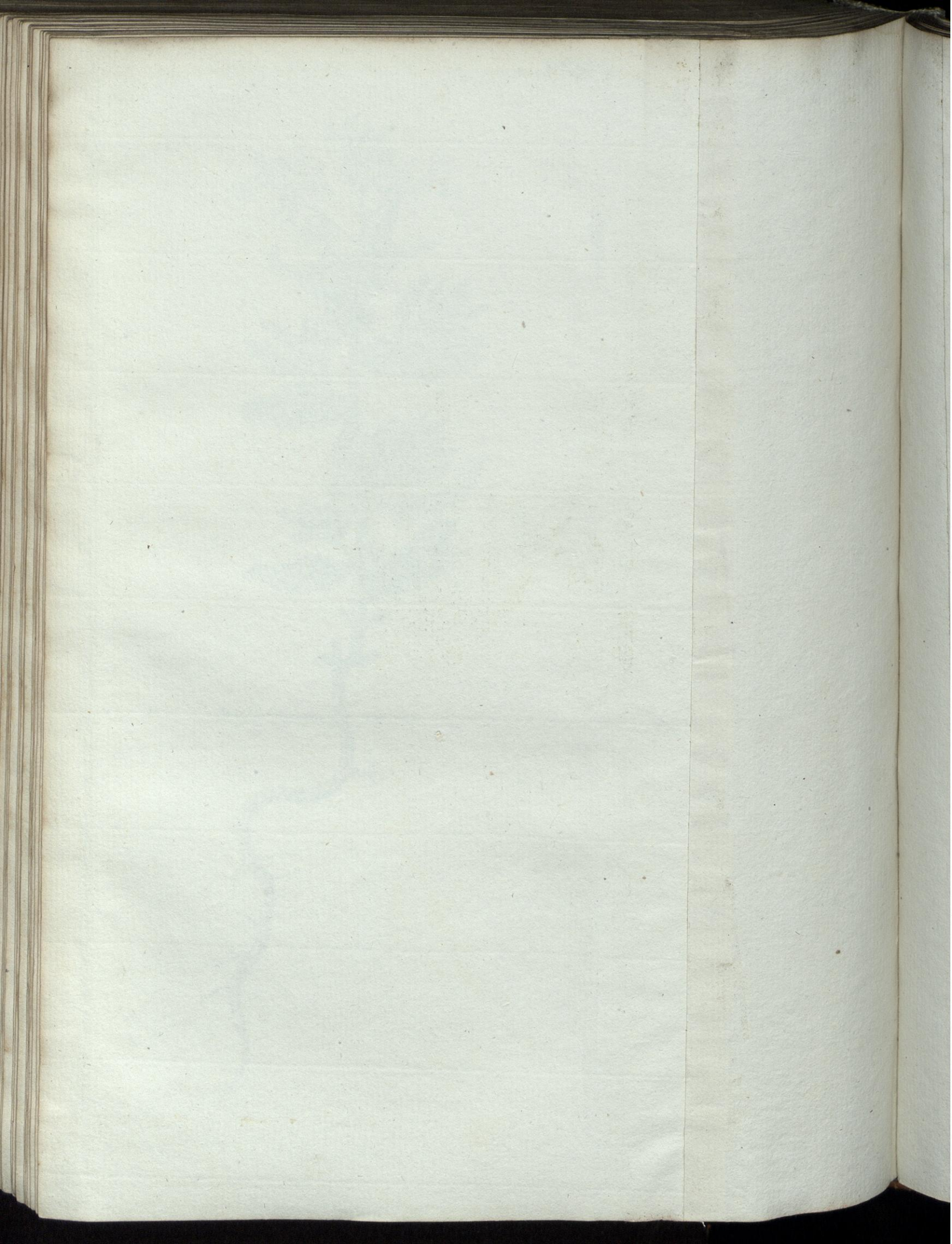




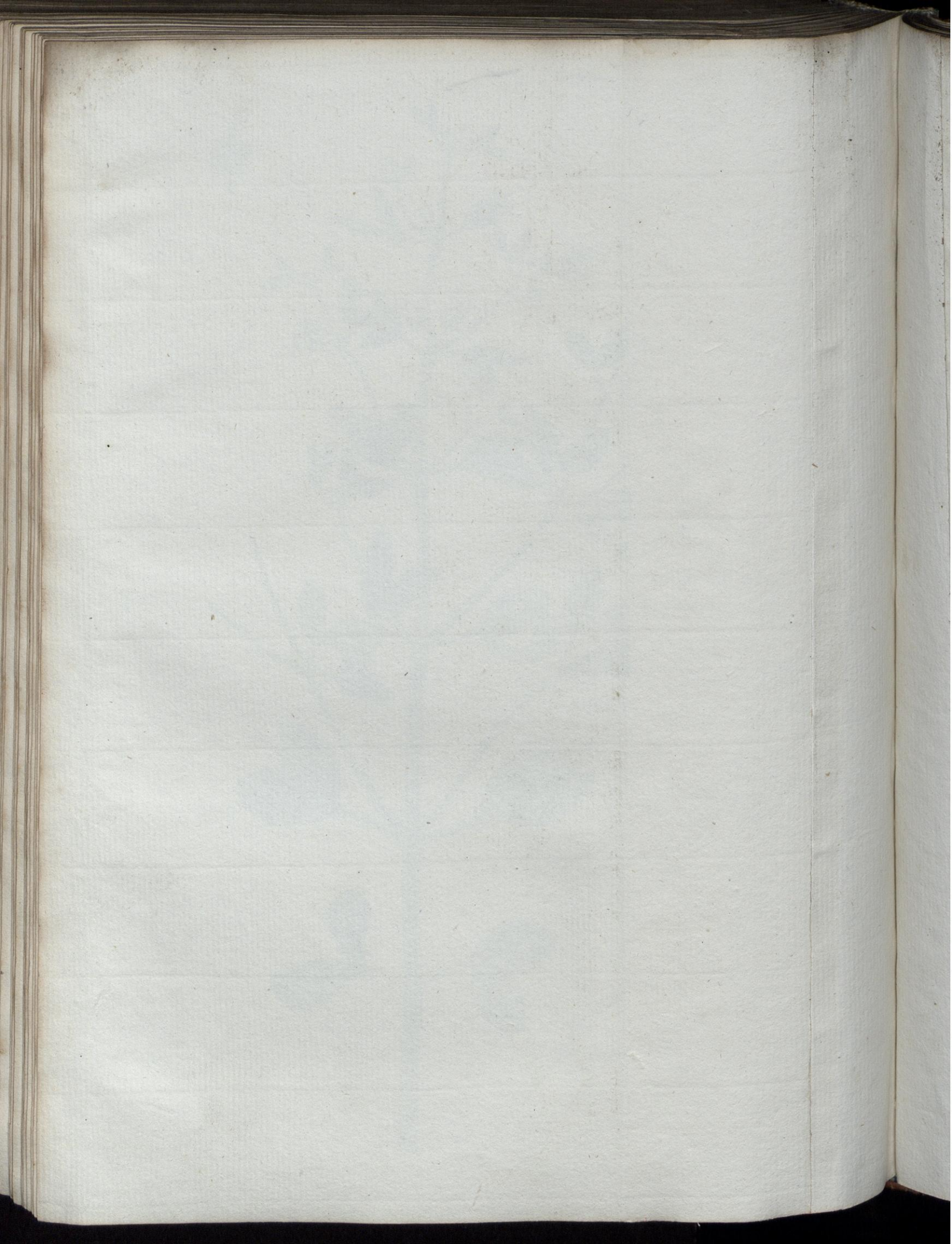
Mesferchia Tab 27



Tab 30 *Peganum harmala*

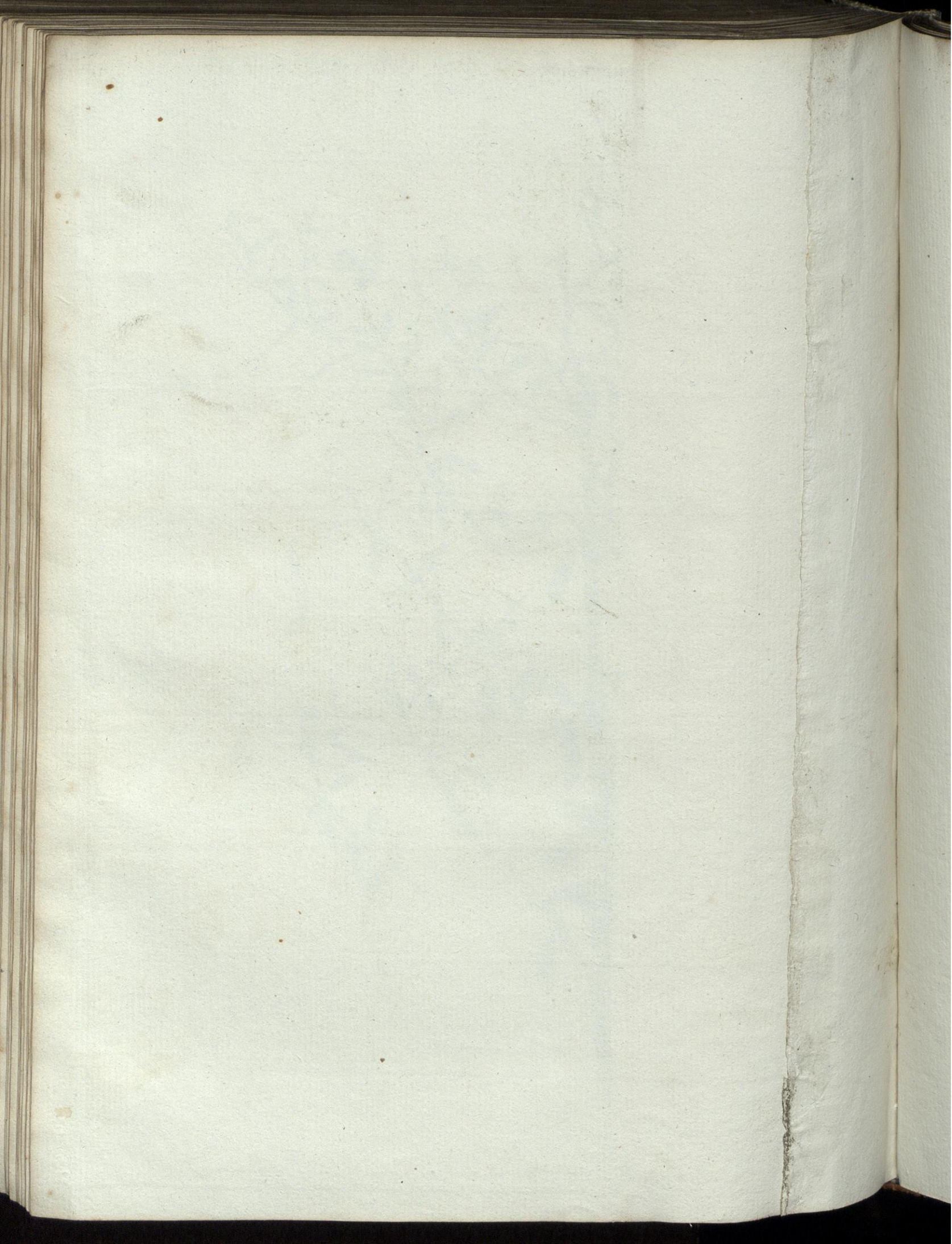








Hedysarum alhagi



Die Tafel Tom. II Tab. 30 fehlt in der Vorlage

The plate Tom. II Tab. 30 is missing in the book

