

Werk

Titel: Reise durch das nordliche Persien, in den Jahren 1770. 1771. bis im April 1772.

Autor: Gmelin, Samuel Gottlieb

Verlag: Kaysarl. Akad. der Wiss.

Ort: St. Petersburg

Jahr: 1774

Kollektion: vd18.digital; Zoologica

Werk Id: PPN63264706X

PURL: http://resolver.sub.uni-goettingen.de/purl?PID=PPN63264706X|LOG_0027

OPAC: <http://opac.sub.uni-goettingen.de/DB=1/PPN?PPN=63264706X>

Terms and Conditions

The Goettingen State and University Library provides access to digitized documents strictly for noncommercial educational, research and private purposes and makes no warranty with regard to their use for other purposes. Some of our collections are protected by copyright. Publication and/or broadcast in any form (including electronic) requires prior written permission from the Goettingen State- and University Library.

Each copy of any part of this document must contain there Terms and Conditions. With the usage of the library's online system to access or download a digitized document you accept the Terms and Conditions.

Reproductions of material on the web site may not be made for or donated to other repositories, nor may be further reproduced without written permission from the Goettingen State- and University Library.

For reproduction requests and permissions, please contact us. If citing materials, please give proper attribution of the source.

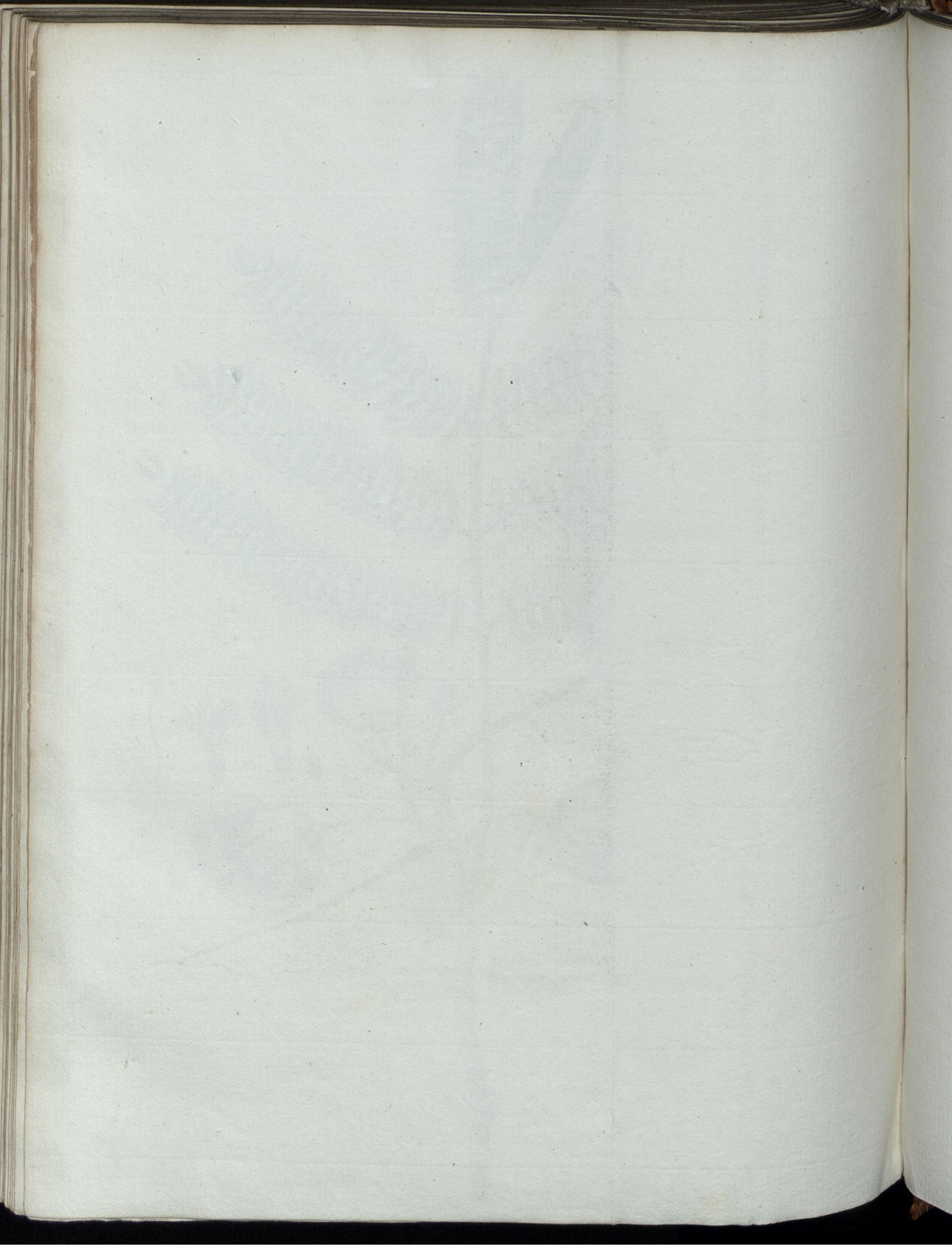
Contact

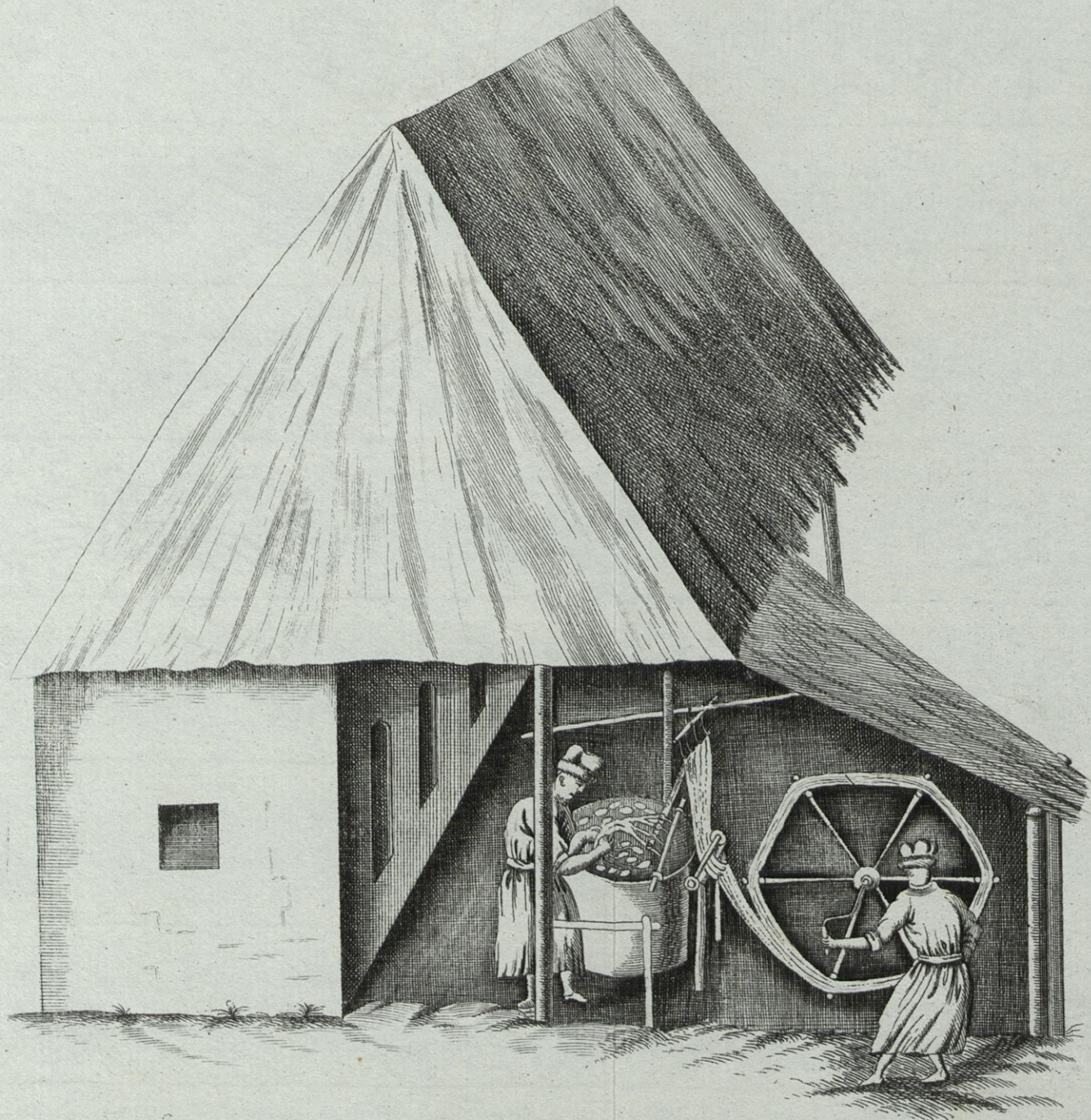
Niedersächsische Staats- und Universitätsbibliothek Göttingen
Georg-August-Universität Göttingen
Platz der Göttinger Sieben 1
37073 Göttingen
Germany
Email: gdz@sub.uni-goettingen.de

Gmelin Reise - Beschreibung Tom. III. Tab. XL.



Mimosa arborea
Ramus arbor. superior





Gmelin Reise Beschreibung Tom. III. Tab. XLII. et XLIII.



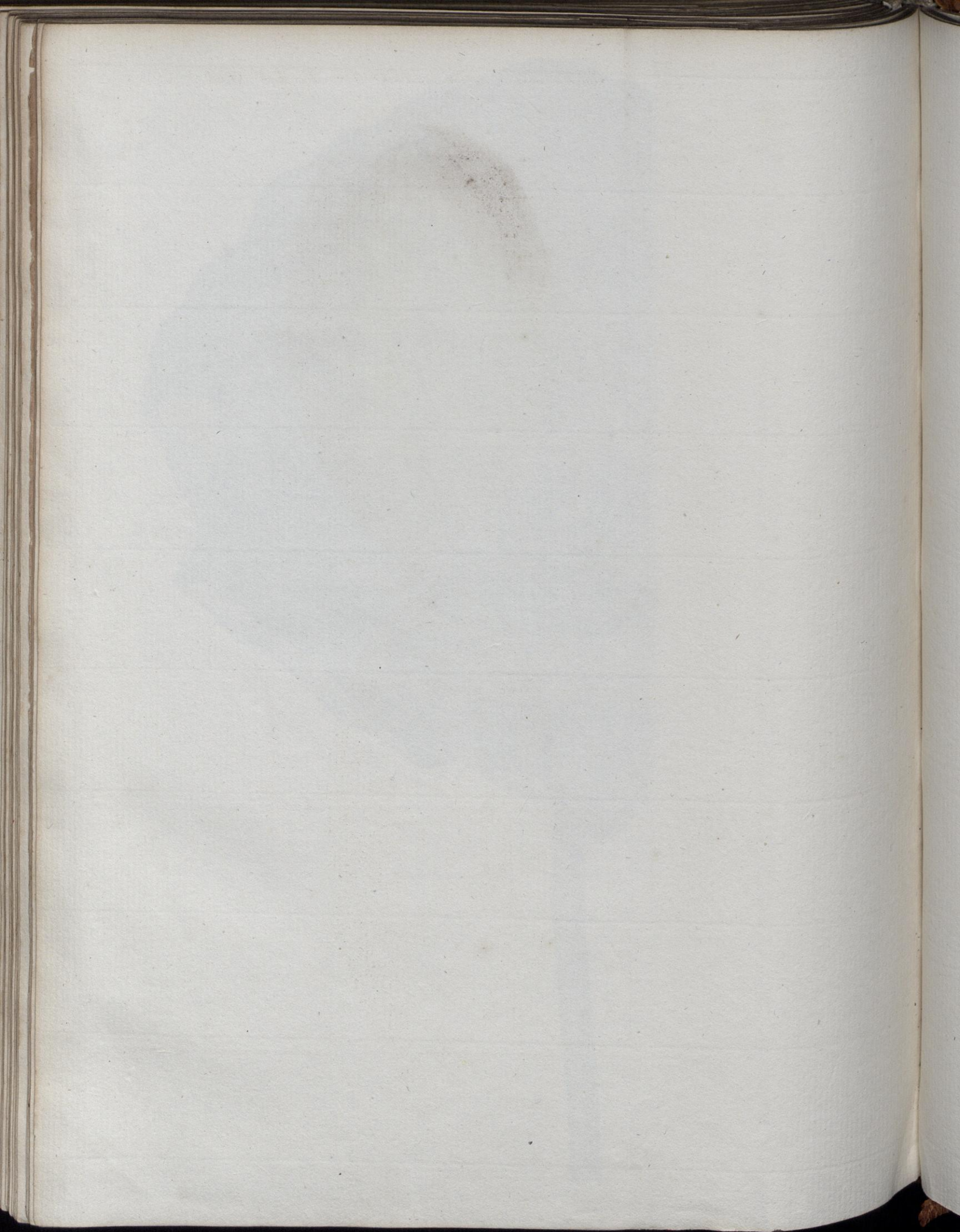
Tab. XLII.

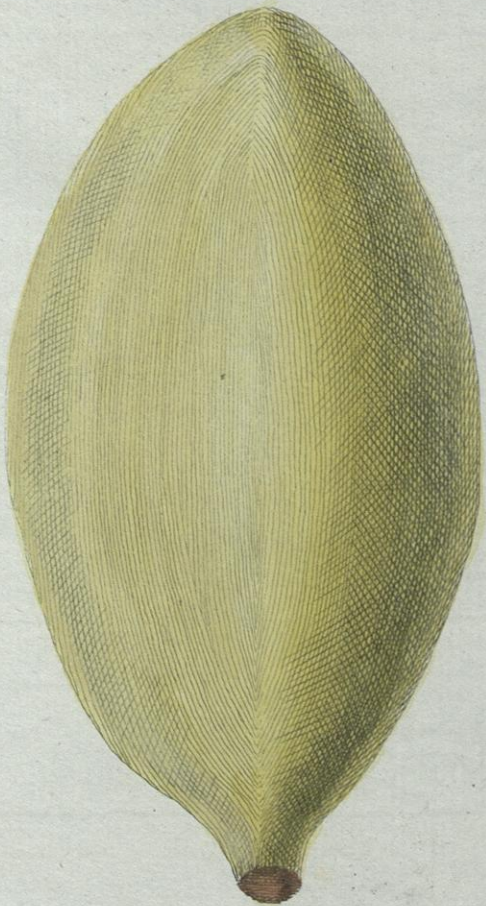
Tab. XLIII.

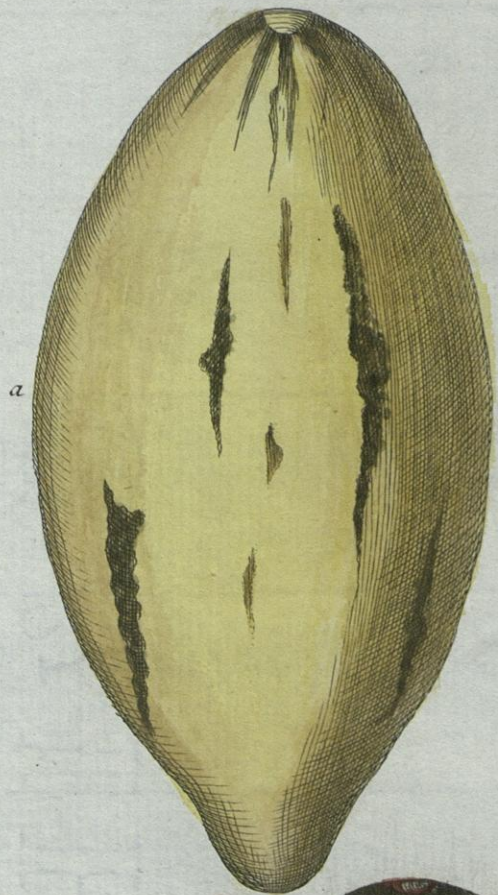




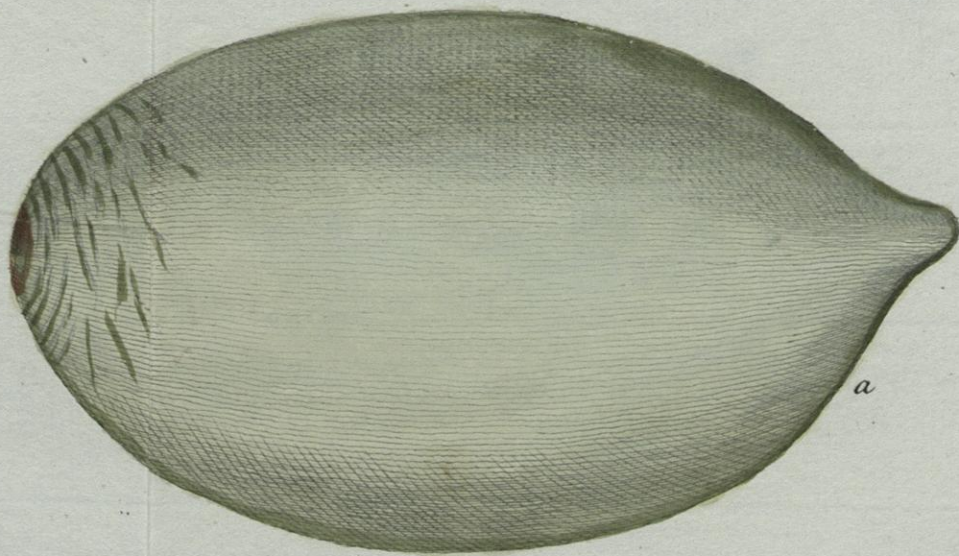
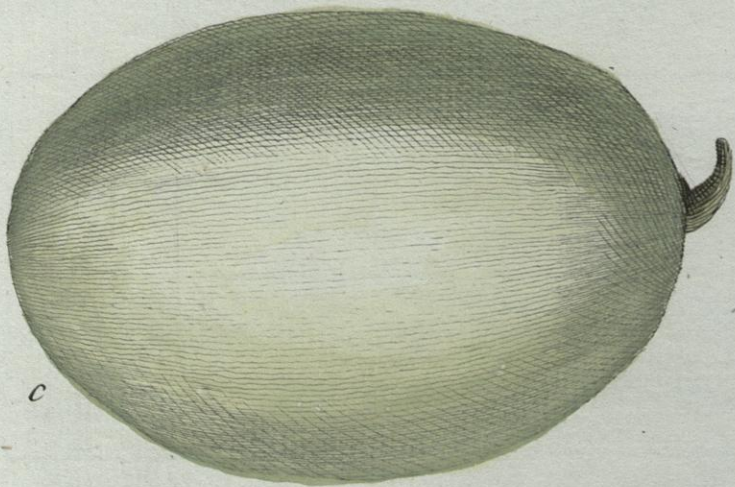
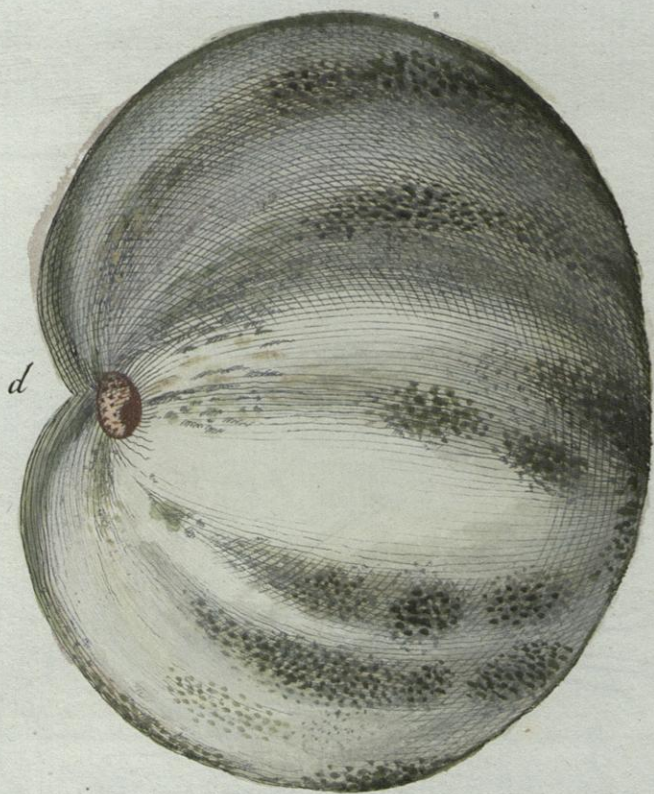




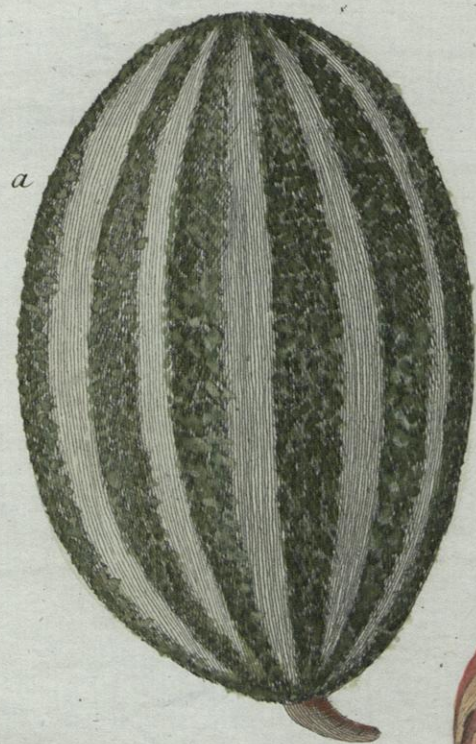




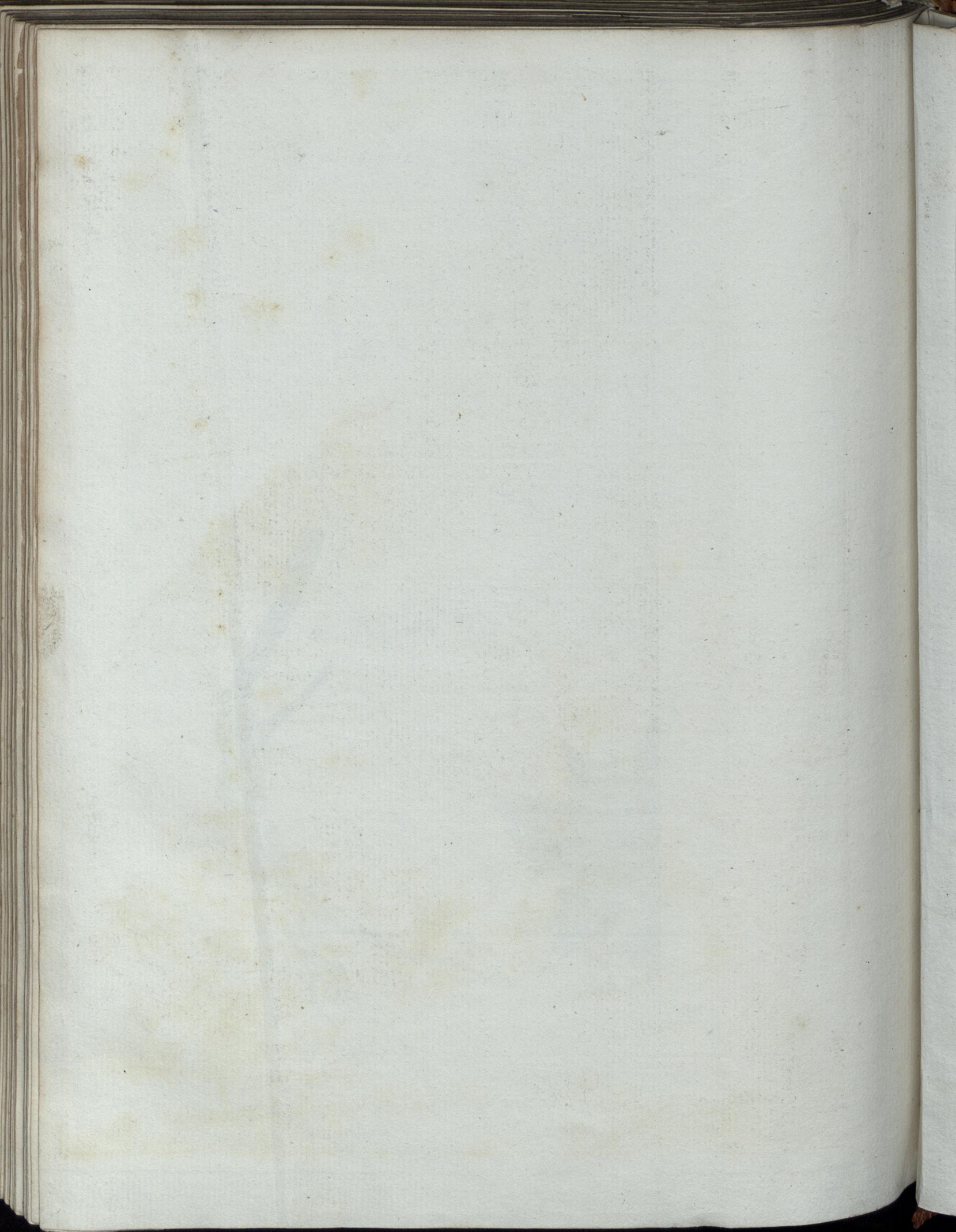
Gmelin Reise-Beschreibung Tom. III. Tab. XLVIII.



Gmelin Reise-Beschreibung Tom. III. Tab. XLIX.

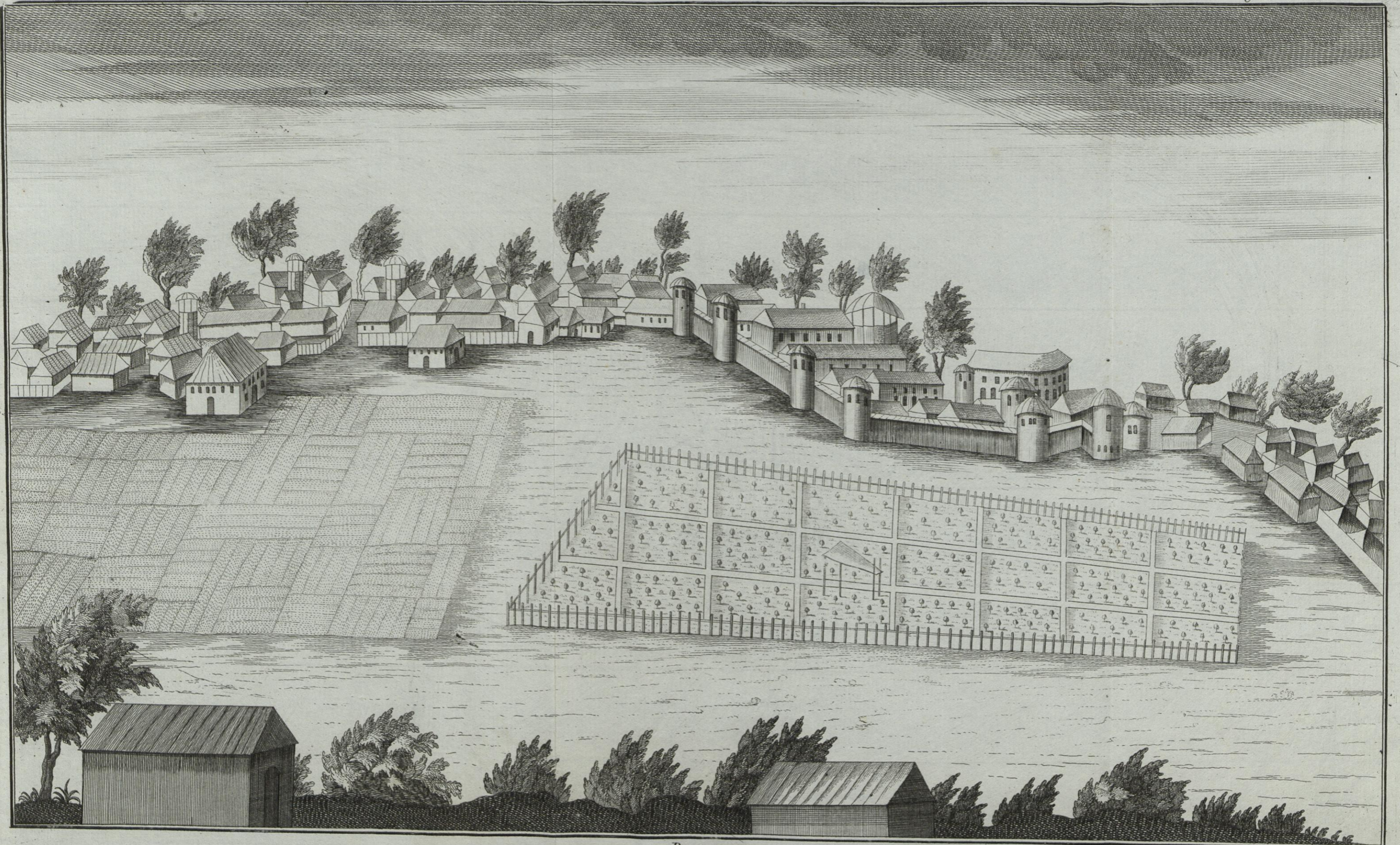




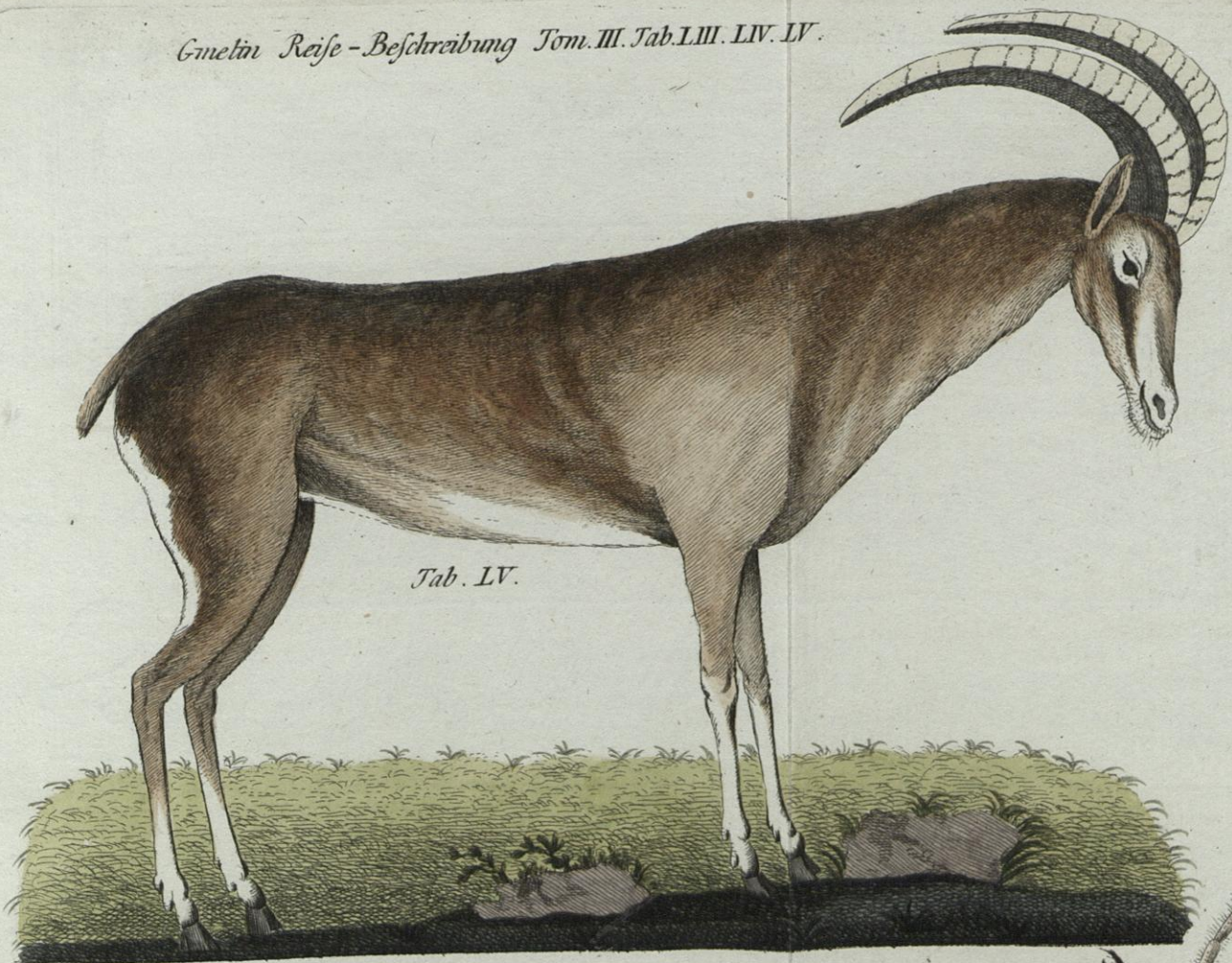




MASSULA



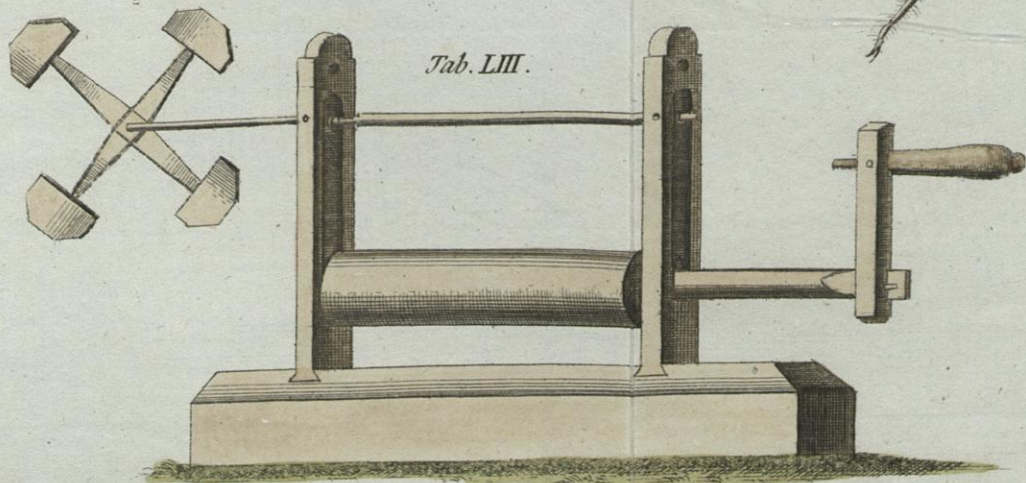
RESCHT



Tab. LV.

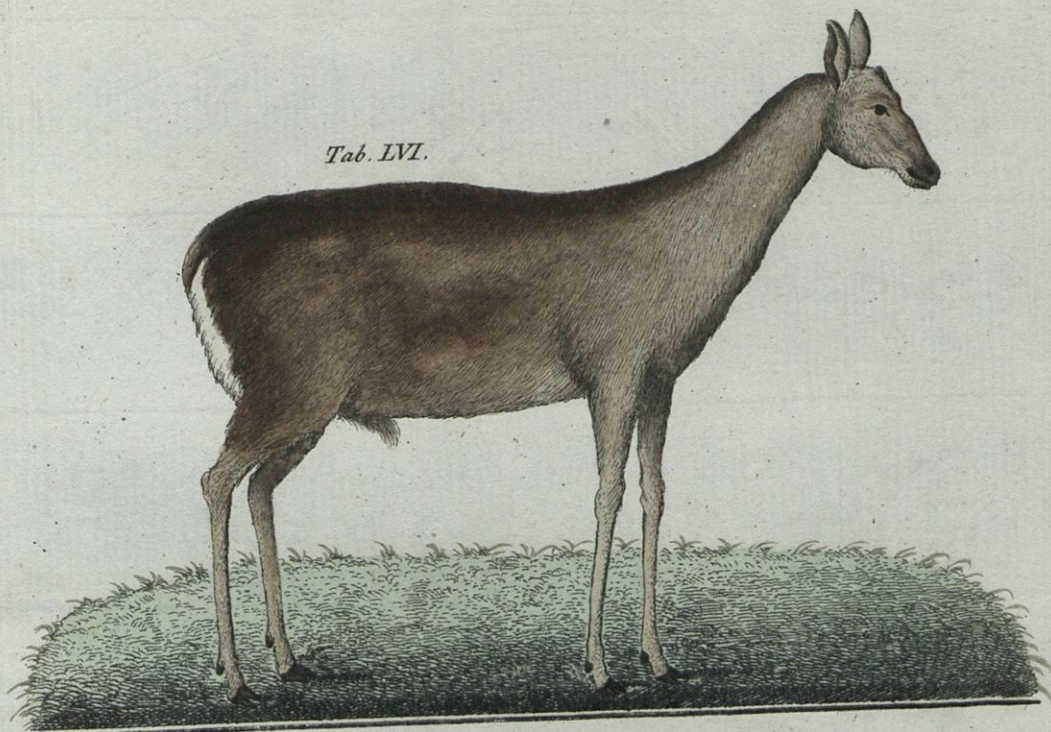


Tab. LIV.



Tab. LIII.

Tab. LVI.



Tab. LVII.



85 12.6.8
87 26.10.8
88 9.1.88
88 18.2.88
193 1.9.88
90 18.11.91
179 29.4.96
93 20.11.97
189.5 5.2.99
198.5 22.11.2000
12 13.11.06
177.5 17.4.09
180 25.5.09

~~did not clip~~